



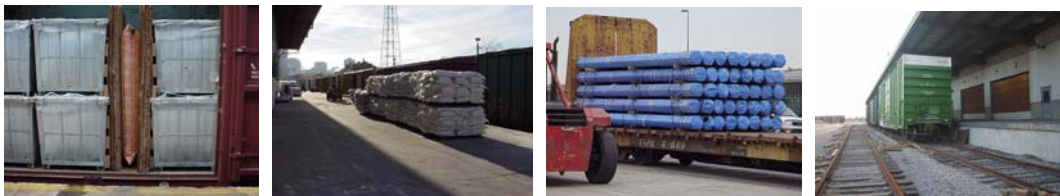
NEW ORLEANS PUBLIC BELT RAILROAD

Serving New Orleans Since 1908

Who are we? The New Orleans Public Belt Railroad is a cargo-carrying railroad operating over 26 miles of track serving the city and outlying areas of New Orleans. Founded in 1908, it was created in order to provide uniform and impartial rail service to New Orleans port and industrial facilities. The New Orleans Public Belt Railroad moves over 12 million tons of freight annually and operates 24 hours per day, 7 days per week.



What do we do? We provide operational and commercial services through direct connection with 6 larger rail companies that enter the New Orleans rail hub. These larger railroads' systems total over 213,000 kilometers (133,000 miles) of track, extending across the entire US mainland, Canada and Mexico. The New Orleans Public Belt Railroad also interchanges with a U.S. – Mexico rail-ferry service, offering New Orleans a direct link to the Mexican rail network. The superior connections and services available at New Orleans are an advantage for any firm seeking to move product via rail.



How can we help you? Our goal is to become as much of a 'one-stop shop' for rail services across the North American Rail Network as possible. The commercial strategy of the Belt is to provide companies with a convenient and accessible, single point of contact for rail and logistics services from origin to destination. We will leverage our many contacts to provide the most efficient, customer-friendly, and cost-effective transport solutions possible. To give you an example of our integrated services, we would provide:

- Rail rate(s), from origin to destination
- Railcar equipment
- Cargo loading patterns and access to load inspectors, ensuring damage-free transit.
- Centralized interface for electronic bill of lading submittal to connecting rail lines.
- Railcar tracking
- Suitable warehousing and distribution facilities and costs (integrated, cross dock, self-service,...)
- A contact 'on the ground' at New Orleans, coordinating shipments among all parties involved

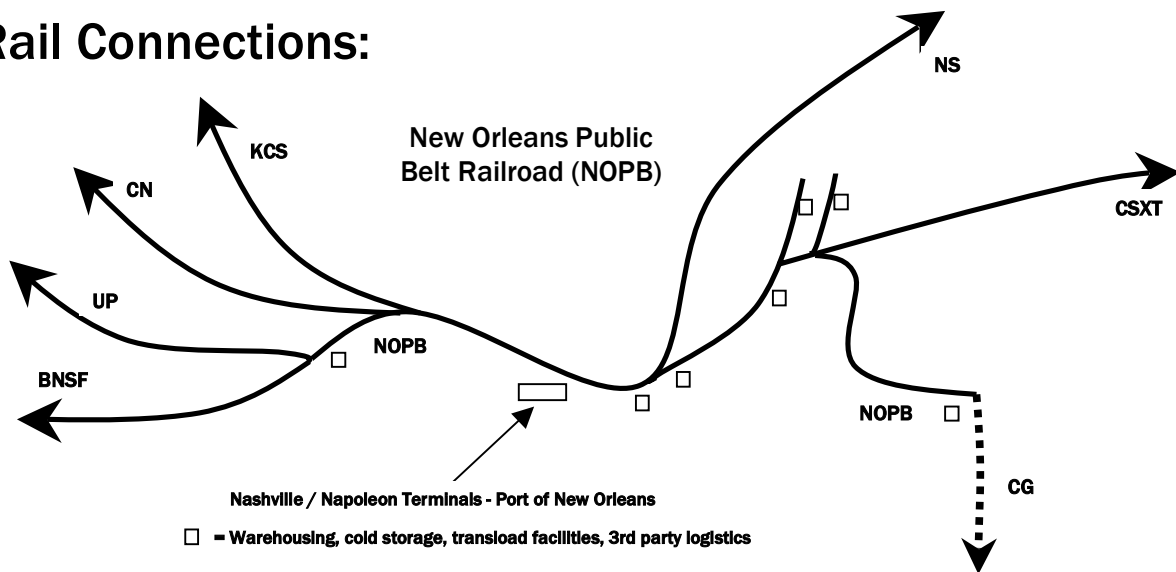
Examples of commodities handled:

- **Steel** - angles, bars, beams, coils, galvanized, pipe, plate, rail, slabs, wire rod...
- **Building materials** - plywood, lumber, roofing shingles, gypsum wallboard, cement board
- **Paper products** - linerboard, printing paper
- **Non-ferrous metals** - aluminum, zinc, copper, zinc (cathodes, ingots, t-bars, sows...)
- **Rubber** - Goodpack bins and palletized
- **Bagged food products** - flour, corn starch, beans, lentils, peas, rice...
- **Frozen food** - poultry, turkey, beef
- **Dimensional / Project cargo** - transformers, rotor forgings, pressure vessels, locomotives...



Railcars and car types: Gondolas, boxcars, bulkhead flatcars, centerbeam flatcars, refrigerator cars, coil gondolas, heavy-duty flatcars...you get the point; the New Orleans Public Belt can supply equipment to serve your needs. Because New Orleans is a large rail hub with thousands of cars moving through the city daily, access to equipment is first-rate. We have also developed a new paradigm in empty railcar ordering, vastly improving equipment owners' asset utilization and cycle time measurements, providing yet another reason why it is advantageous to position cars at New Orleans. We also lease railcars on behalf of our clients and currently maintain a fleet of boxcars and gondola cars.

Rail Connections:



BNSF – (BNSF Railway) - 53,130 km (33,000 mi) in 28 states, 2 Canadian provinces - western two-thirds of USA

CN – (Canadian National Railway) - 31,070 km (19,300 mi) in Canada/USA.

CSXT – (CSX Transportation, Inc.) – 37,030 km (23,000 mi) in 23 eastern states and 2 Canadian provinces

KCS – (Kansas City Southern Railway) – 5,040 km (3,130 mi) in 10 central and southeastern states.

NS – (Norfolk Southern Railway) - 34,290 km (21,300 mi) in 22 eastern states and Ontario, Canada

UP – (Union Pacific Railroad) - 52,860 km (32,830 mi) covering 23 states across western two-thirds of USA

CG – (CG Railway) – Rail-ferry service between New Orleans and Coatzacoalcos Mexico.

How to get started: Reach out to our Business Development Department. Call, email, stop by - (504) 896-7440, info@nopb.com, 4822 Tchoupitoulas Street, New Orleans, LA 70115